

# SOUTH TOWER AZURE RESIDENCE



**MARITZA MEZA**  
MARITZA@MEZAGROUP.COM  
C: 954.648.2442



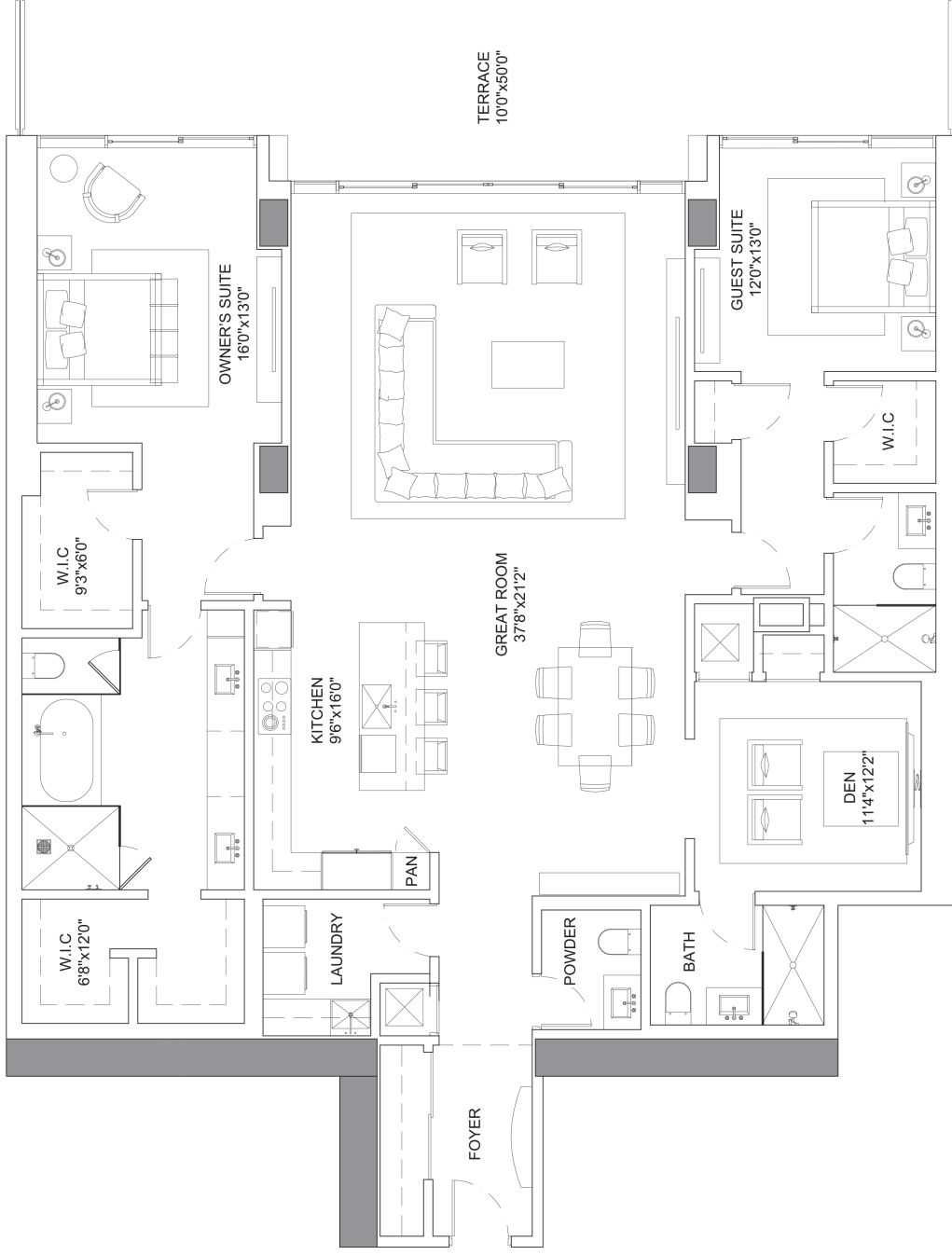
**GIANPIERRE GIUSTI**  
GIANPIERRE@MEZAGROUP.COM  
C: 954.802.8525



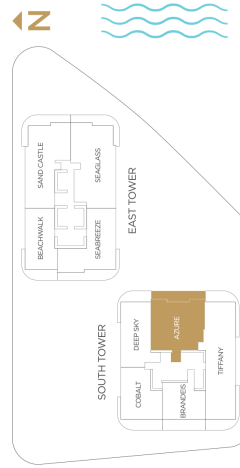
**Selene**  
OCEANFRONT RESIDENCES  
FORT LAUDERDALE

## Specifications

2 Bedrooms   3.5 Bathrooms   Den	
Interior	2,423 SQFT
Exterior	436 SQFT
Total Area	2,859 SQFT



\*Preliminary Draft - Version 1



ORAL REPRESENTATIONS CANNOT BE RELIED UPON AS CORRECTLY STATING REPRESENTATIONS OF THE SELLER. FOR CORRECT REPRESENTATIONS, MAKE REFERENCE TO THIS BROCHURE AND TO THE DOCUMENTS REQUIRED BY SECTION 718.503, FLORIDA STATUTES, TO BE FURNISHED BY A SELLER TO A BUYER OR LESSEE. Prices, terms and availability are subject to change at any time without notice. All dimensions are approximate and subject to change without notice. The above information is subject to the absolute right, in its sole judgment and discretion, to substitute any materials, fixtures and finishes of a similar or better quality, without notice. The above information is for informational purposes only and does not constitute an offer. The total square footage of a condominium unit may vary more than a normal amount. The total condominium square footage as shown in this brochure are based on the "Architectural Method" of measurement, which measures the exterior perimeter of the condominium unit, and also includes interior columns and fifty percent of demising walls. The method for calculating residential square footage used in marketing materials is different from the method used in condominium documents. Please see the Declaration of Condominium at the end of this brochure for more information. This model shown includes optional upgrades that are not a part of a base residence pricing. © The Kottler Group, March, 2021.