

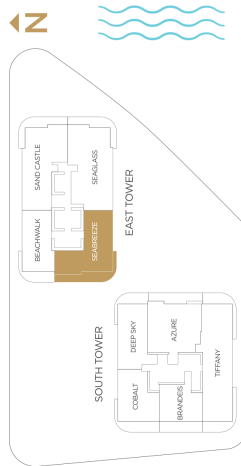
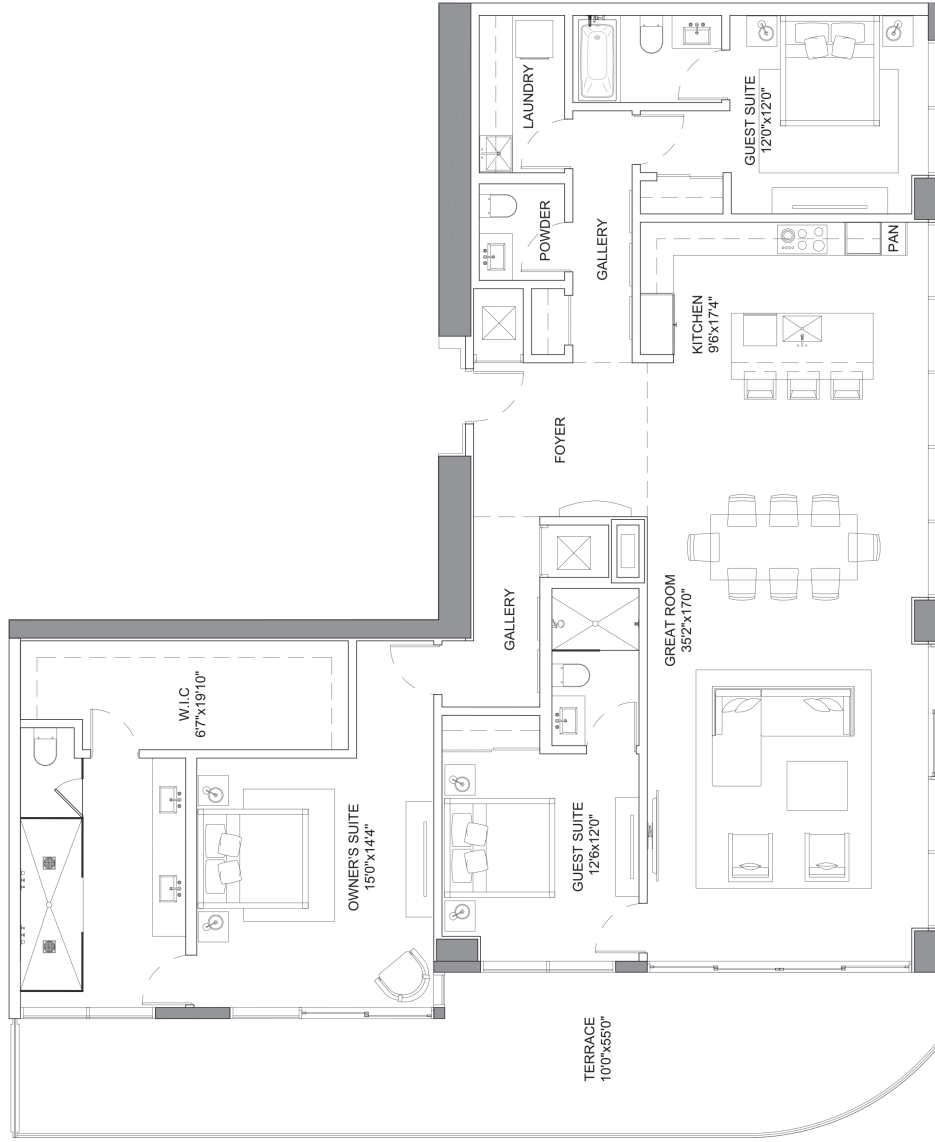
EAST TOWER SEABREEZE RESIDENCE

Selene

OCEANFRONT RESIDENCES
FORT LAUDERDALE

Specifications

3 Bedrooms 3.5 Bathrooms	2,285 SQFT
Interior	543 SQFT
Exterior	2,828 SQFT
Total Area	



MARITZA MEZA
MARITZA@MEZAGROUP.COM
C: 954.648.2442



GIANPIERRE GIUSTI
GIANPIERRE@MEZAGROUP.COM
C: 954.802.8525

*Preliminary Draft - Version 1



ORAL REPRESENTATIONS CANNOT BE RELIED UPON AS CORRECTLY STATING REPRESENTATIONS OF THE SELLER. FOR CORRECT REPRESENTATIONS, MAKE REFERENCE TO THIS BROCHURE AND TO THE DOCUMENTS REQUIRED BY SECTION 718.503, FLORIDA STATUTES, TO BE FURNISHED BY A SELLER TO A BUYER OR LESSEE. Prices, terms and availability are subject to change at any time without notice. All dimensions are approximate and are subject to change without notice. The absolute right, in its sole judgment and discretion, to substitute any material, finish, color and fixture for that shown in this brochure is hereby reserved. The floor area shown in this brochure is based on the "Architectural Method" of measurement, which measures the exterior perimeter of the condominium unit, and also includes interior columns and fifty percent of demising walls. The method for calculating residential square footage used in marketing materials is different from the method used in condominium documents. Please see the "Disclosure of Calculation of Condominium Square Footage" in the condominium documents. This model shown includes optional upgrades that are not a part of a base residence pricing. © The Kottler Group, March, 2021.