

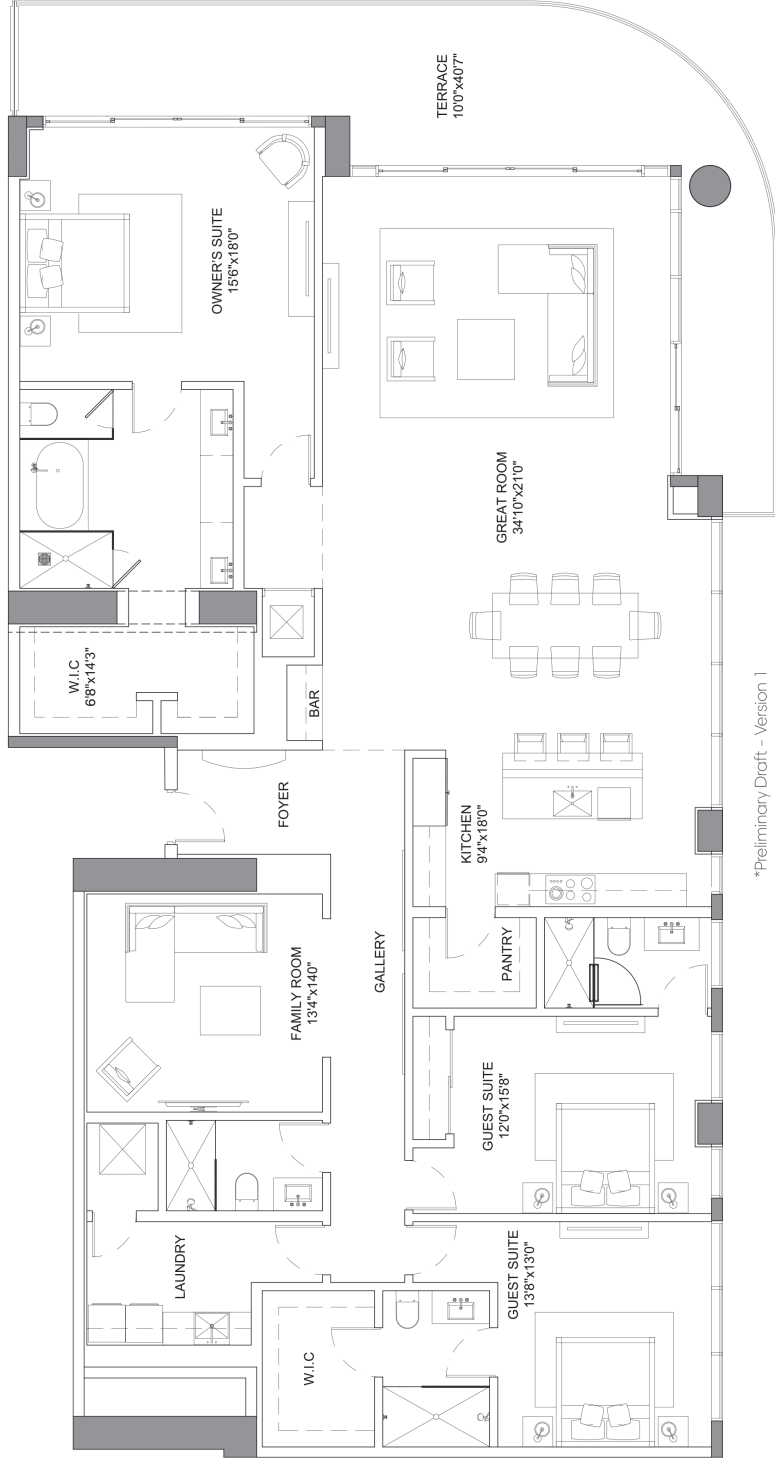
# EAST TOWER SEAGLASS RESIDENCE

Selene

OCEANFRONT RESIDENCES  
FORT LAUDERDALE

## Specifications

3 Bedrooms   4 Bathrooms   Family Room	
Interior	3,127 SQFT
Exterior	473 SQFT
Total Area	3,600 SQFT



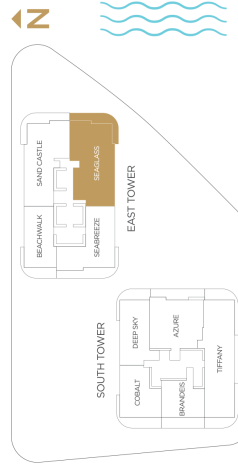
\*Preliminary Draft - Version 1



**MARITZA MEZA**  
MARITZA@MEZAGROUP.COM  
C: 954.648.2442



**GIANPIERRE GIUSTI**  
GIANPIERRE@MEZAGROUP.COM  
C: 954.802.8525



ORAL REPRESENTATIONS CANNOT BE RELIED UPON AS CORRECTLY STATING REPRESENTATIONS OF THE SELLER. FOR CORRECT REPRESENTATIONS, MAKE REFERENCE TO THIS BROCHURE AND TO THE DOCUMENTS REQUIRED BY SECTION 718.503, FLORIDA STATUTES, TO BE FURNISHED BY A SELLER TO A BUYER OR LESSEE. Prices, terms and availability are subject to change at any time without notice. All dimensions are approximate and subject to change without notice. The above information is subject to the absolute right, in its sole judgment and discretion, to substitute any material, fixtures and finishes for those shown. The above information is for informational purposes only and does not constitute an offer. The total condominium square footage as shown in this brochure are based on the "Architectural Method" of measurement, which measures the exterior perimeter of the condominium unit, and also includes interior columns and fifty percent of demising walls. The method for calculating residential square footage used in marketing materials is different from the method used in condominium documents. Please see the Declaration of Condominium and other documents. The model shown includes optional upgrades and is not a part of a base residence pricing. © The Kottler Group, March, 2021.